

AE5640-K16 Garmin Kit to CIH 5088, 6088, 7088, 5130, 6130, 7130, 8130, 7230, 8230, 9230

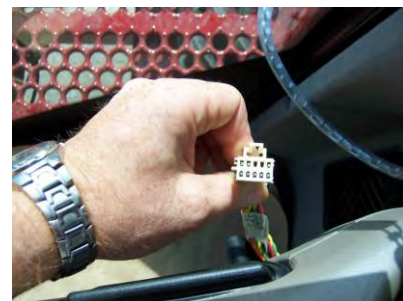
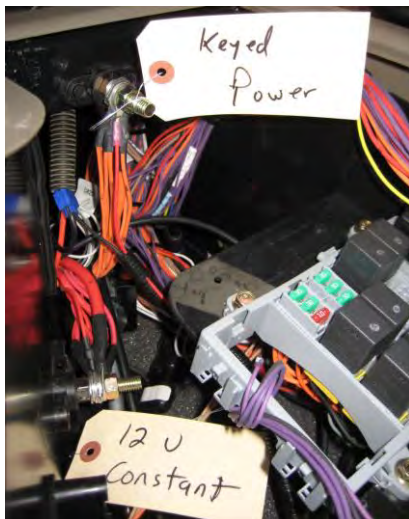
Kit Contents:

AE5640: Garmin Receiver
AE5641: Magnetic Mounting Plate
AE72991: RJ45/DB9 Adapter
AE2835: Adapter Cable

Follow these steps when connecting a Garmin receiver kit to the above models of CIH combines.

1. Power down the machine and leave the key switch in the off position.
2. Access the fuse/relay panel and locate the 10 pin Metri-Pack connector.
3. Plug the AE2835 adapter cable into this connector.
4. The AE2835 cable also has two ring terminals for hooking to power. See the below picture for reference to hook to keyed power and ground inside the panel.
5. Plug the AE2835 adapter cable into the AE72991 adapter.
6. Plug the Garmin receiver RJ45 connector into the AE72991 adapter.
7. The receiver has been preprogrammed to work with this system.
8. Settings for GPS input may vary depending on which display is installed in the combine. Reference the display operator's manual to change these settings. The display should be set to receive an RS-232 NMEA GPS input.

Power
Connection



10 Pin Metri-Pack
Connector