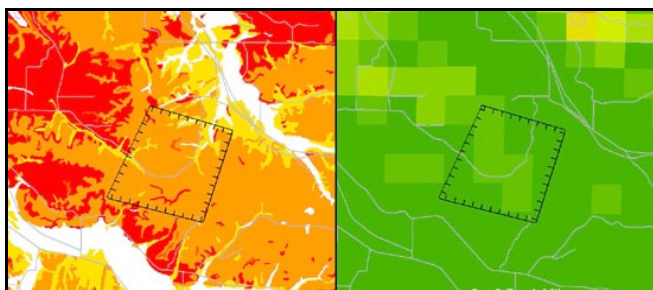


## Inexpensive Receiver Kits for Yield Mapping



**→ These Receiver Kits will allow you to do Mapping with your Yield Monitor**

### Overview:

If you have a Yield Monitor in your combine, but no Receiver – you can add a low priced Receiver Kit to add mapping capabilities to almost any Brand or Model of Combine Yield Monitor.

- The kit comes with a 16 Channel Receiver that provides the same maps that receivers costing several thousand dollars provide.
- Each receiver kit is programmed to the specific yield monitor and combine.
- The kit includes:
  - Programmed 16 Channel High Accuracy Receiver with mounting plate.
  - Any required harness adapters or interface cable.

**Here are some Examples:** We have a kit for most brands and models of Yield Monitors & Combines.

Description	Part Number	List Price
JD® Combine w/Original Display & Mobile Processor <small>(connector not pictured)</small>	AE5640-K3	425.00
JD® 10 Series Combine (Silver or Gold Processor) <small>(connector not pictured)</small>	AE5640-K4	400.00
JD® Combine w/GS2 or GS3 <small>(connector not pictured)</small>	AE5640-K14	400.00*
GS2 or GS3 Add on Serial Cable	AE3168	75.00
Ag Leader® PF 3000 Pro™ & PF Advantage™	AE5640-K2	350.00
Ag Leader® 2000, 3000 & Insight™, Edge™ & Integra™	AE5640-K9	350.00
Case® 21/2300 Series Combine <small>(connector not pictured)</small>	AE5640-K8	400.00
Case® 2500 Series, 2577 & 2588 Combine <small>(connector not pictured)</small>	AE5640-K11	400.00
Case® 7010, 8010, 7120, 8120 & 9120 Combine	AE5640-K10	400.00
Case® 50-60-7088 & 51-61-71-81-72-82-9230 Combine	AE5640-K16	400.00
Case® PRO600/700 RS232 Serial Port	AE5640-K17	400.00
NH® CR9040, 9050 & 9060 Combine	AE5640-K15	400.00
CLAAS-LEXION® Combine	AE5640-K12	400.00
CLASS-LEXION® 470 Combine <small>(connector not pictured)</small>	AE5640-K20	400.00
AGCO® FieldStar® Legacy Connection	AE5640-K19	400.00
AGCO® FieldStar® II Connection (9 Pin AMP)	AE5640-K18	400.00

**\* May Require AE3168 Cable**

AE5640-K2	AE5640-K9	AE5640-K10 AE5640-K15 AE5640-K16	AE5640-K12 AE5640-K17	AE5640-K18	AE5640-K19